


Project Build Off Contest

ATAT Conference
July 2021

A dark blue diagonal gradient bar that starts from the bottom left corner and extends towards the top right corner, covering the lower half of the slide.

Project Build Off Contest

Purpose

- To have students build a preplanned project within a time period by themselves to be judged
- Use skills from class/lab instruction in a real world setting to complete work
- How well have you trained your students to work by themselves with little instruction?

Contest Intent

Why host a contest like this?

Why participate in these contests?

- Give students a taste of a simulated jobsite
- Challenge their critical thinking
- Help students decide whether or not this career path is for them
- Focus on student skill exercised that day
- Enforces the concept of having deadlines
- Promotes teamwork

History

How did these contests start?

- Started with a desire to challenge students in a new way
- Work hands on outside of a shop/lab setting
- Heads up competition to see who is the best
- Student based vs Project based
 - Focuses on skill and work ethic as much as a finished project
- We want to make good employees

Hosting a contest

- What to build
- Planning
- Rules
- Entry Fees
- Space/Location
- Judging Criteria/Finding Judges
- Prizes

What to Build

- Easy to sell
- Functional
- Buildable









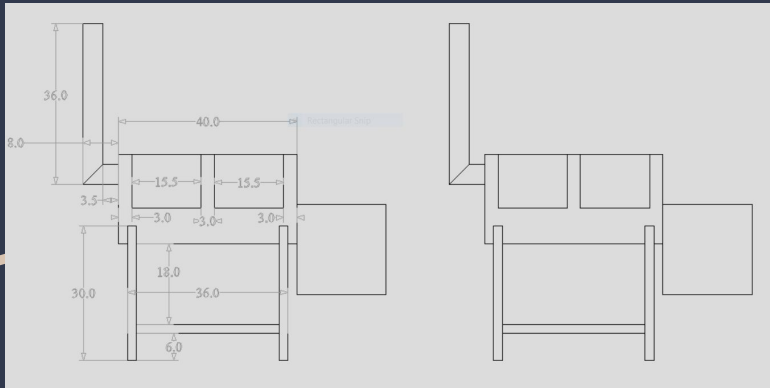
Planning



- Start early
- Cut/purchase extra parts
- Make your kits
- Space for made kits
- Forklift needed

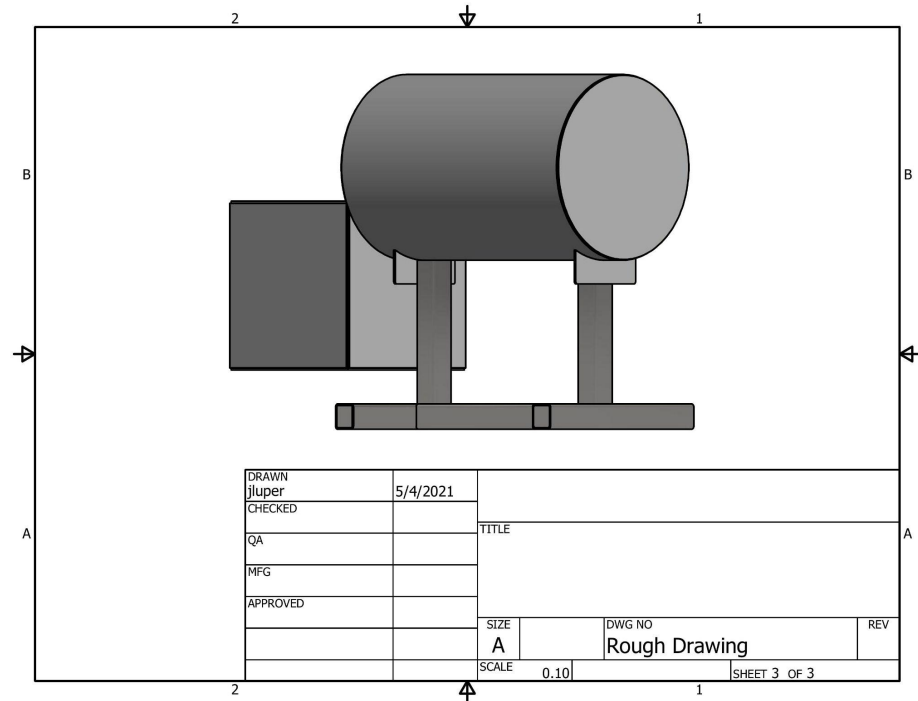
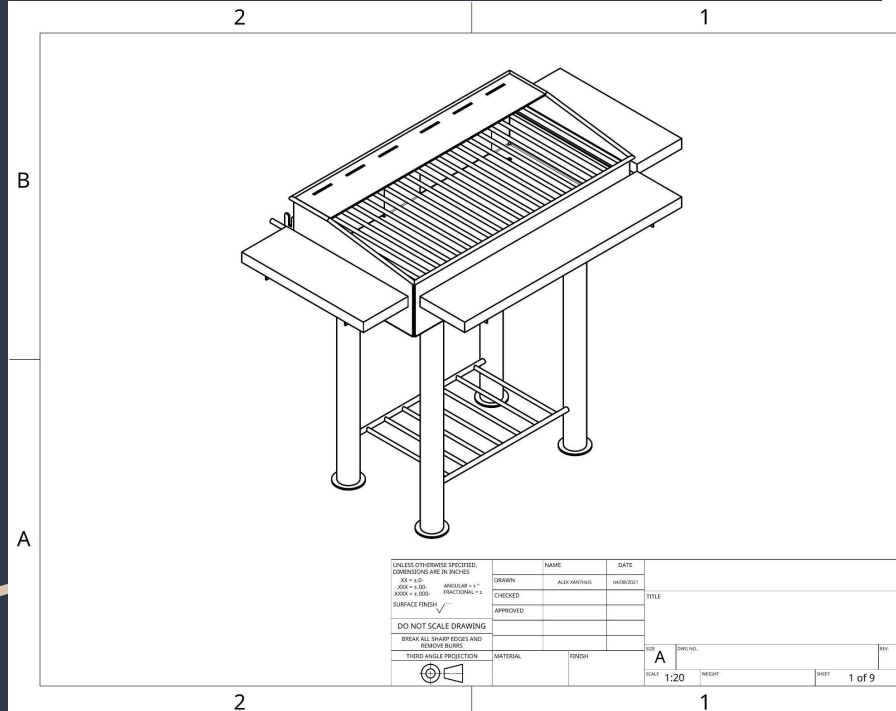
Rules

- Honor system
- Rubric
- Make it how you want
- Customization of pit



Plans of Project

- Have plans for the project
- Have a proto type or sample of the project
- Standard grading system



Entry Fees

- Must cover the cost of the project
- Fundraiser
- How to take money

Space

- Facilities
- Clean up after contest
- Get on your district calendar
- Permission slip/release of liability forms
- Clear with administration

Day of Contest

- Setting out kits
- Judges meeting
- Coaches meeting
- Advertise
- Thank and recognize sponsors/donors

Judging Criteria/Finding Judges

- Rubric
- Get judges
from industry
- Ag teacher

Prizes



- What kind of prizes
- T-Shirt/Goodie Bag
- How many
- Recognition
- Side contest



Question over
hosting a contest

Contact information
will be on the last
slide

Competing in a contest

- Planning
- Safety
- Students
- After the contest

Planning

- Outfitting
your
welding rig
- Pre Check

Outfitting your rig

- Four of everything
- 2 engine driven welders
- Cutting wheels
- Torch
- Fire extinguisher
- Welding electrodes
- Tables/work surfaces
- Clamps
- Tape measures
- Extension cords
- Soapstone/paint markers
- Tools Box
- Chop Saw
- Spent rod bucket
- Magnet for cleanup
- Ice chest





Pre Check

- Fill up with fuel
- Check gases in bottles
- Crank and run your engine driven machines

Safety

- Number one priority
- Example we set
- Expectations
- PPE for everyone
- Fuel
- Bare Wires
- Fire Extinguishers
- Grinder guards
- Safety Violations

Safety Violations

IF YOU SEE A
SAFETY
VIOLATION FROM
ANY TEAM YOU
MUST SAY
SOMETHING

Students

- Four workers
- Work for long periods of time
- Be able to think without you
- Need a leader
- I like to have two welders and two fabricators
- All as one
- Teamwork
- Time management









After the Contest

- Be prepared to take your project home
- Clean your work area
- Students are going to be tired
- Bring other students to watch
- Win and lose as a team

Contact Information

Micah Fry

Bland FFA

micah.fry@blandisd.org

903-467-6358

JT Luper

Sulphur Springs FFA

jluper@ssisd.net

806-252-5310